

771-FAVOURITE LED

Industrial dust- and waterproof luminaires with LED-modules

Now with a new, opalized diffuser with unique light transmissivity!
Specially developed for LED applications



FIELD OF APPLICATION:

Thanks to the construction principles of gasket, closing system and diffuser our LED fixtures ensure a high grade of protection (IP 65, IP 66 or IP 67) against dust, contamination and water permeation. In accordance with their IP grade they can be widely used to illuminate spaces with dusty, humid environment.

When using outdoors, the fittings should be protected against direct sunlight and adverse weather conditions.

TECHNICAL DESCRIPTION AND BENEFITS:

- **Diffuser:** Our LED-luminaires with **opal** diffuser offer you:
 - **extremely high light efficiency** through high **light permeability, unique on the market**, (up to 93% light transmissivity)
 - an **excellent light uniformity** through **well-balanced light dispersing** (no shadows)
 - **elimination of the dazzling effect** (no glaring)
 - **aesthetical appearance (no dots)** of the single LEDs)
 - **keeping the usual, well known features of the diffuser** such as chemical and heat resistance, mechanical features, **UV-stabilization** etc.

Available in PC - injection moulded **Polycarbonate** (high mechanical strength and high heat and shock resistance) **or in Acrylic** - injection moulded **PMMA** (unique non-aging properties, high chemical resistance).

- **Housing:** It is made of flame retardant glass-fibre reinforced polyester (on request suitable for 850°C glow wire test too), in light grey (RAL7035) colour. Glass-fibre reinforced polyester has very good temperature resistance, mechanical stability, furthermore it is a good electrical insulator, it resists the impacts of several chemicals and the impacts of weather conditions. Its stability of size and shape at changing temperatures is excellent.
- The **gasket** between the diffuser and housing is made of non-aging **PU (polyurethane)** foam. In order to ensure **maximum** chemical and weather **resistance** even under tough conditions, **silicon-based gasket** with enhanced resistance is optionally available.
- **Fixing the diffuser to the body:** with highly resistant polyamide clips or with stainless steel clips. Anti-vandal stainless steel clips available on request.
- **Gear tray** (reflector): White powder coated steel sheet according to **Zhaga** standards or customized.
- **Electrical components:** The adequate power supply is ensured through electronic driver, that is built into the luminaire.

LED

CE



771 - FAVOURITE LED

IP65



Option:

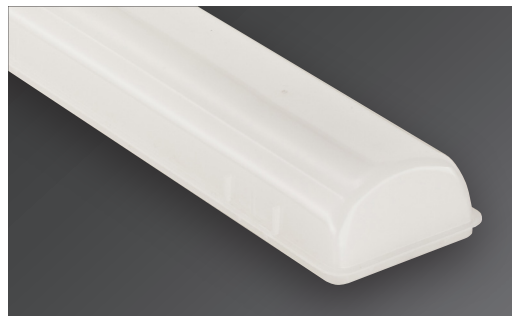
IP66

IP67



Technical options

Our new opal diffuser has an **outstanding light transmissivity** up to **93%**. With this great light permeability, it is an **excellent choice for luminaires equipped with LED-modules**.



Unique
on the market

Usual stainless steel clips for **SELV** (Safety Extra Low Voltage) solutions.

The opal diffusers are made of UV-stabilized **opalized** material, specially developed for LED applications. This ensures among others a well-balanced light distribution and the **elimination of glaring**.

The special "antivandal" stainless steel clips for **non-SELV (HV)** solutions can not be released with bare hands.



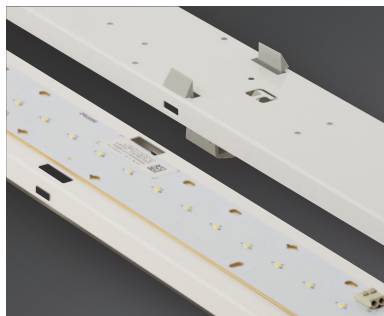
With 771-Favourite LED - depending on customer requirements - we can reach different levels of luminous flux (lumen) as well as luminous efficacy (lm/Watt). Details see attached overview.



In order to optimize the thermal management of the luminaire we avoid the direct contact of the gear tray and driver, thus increasing the lifetime of the modules and driver.

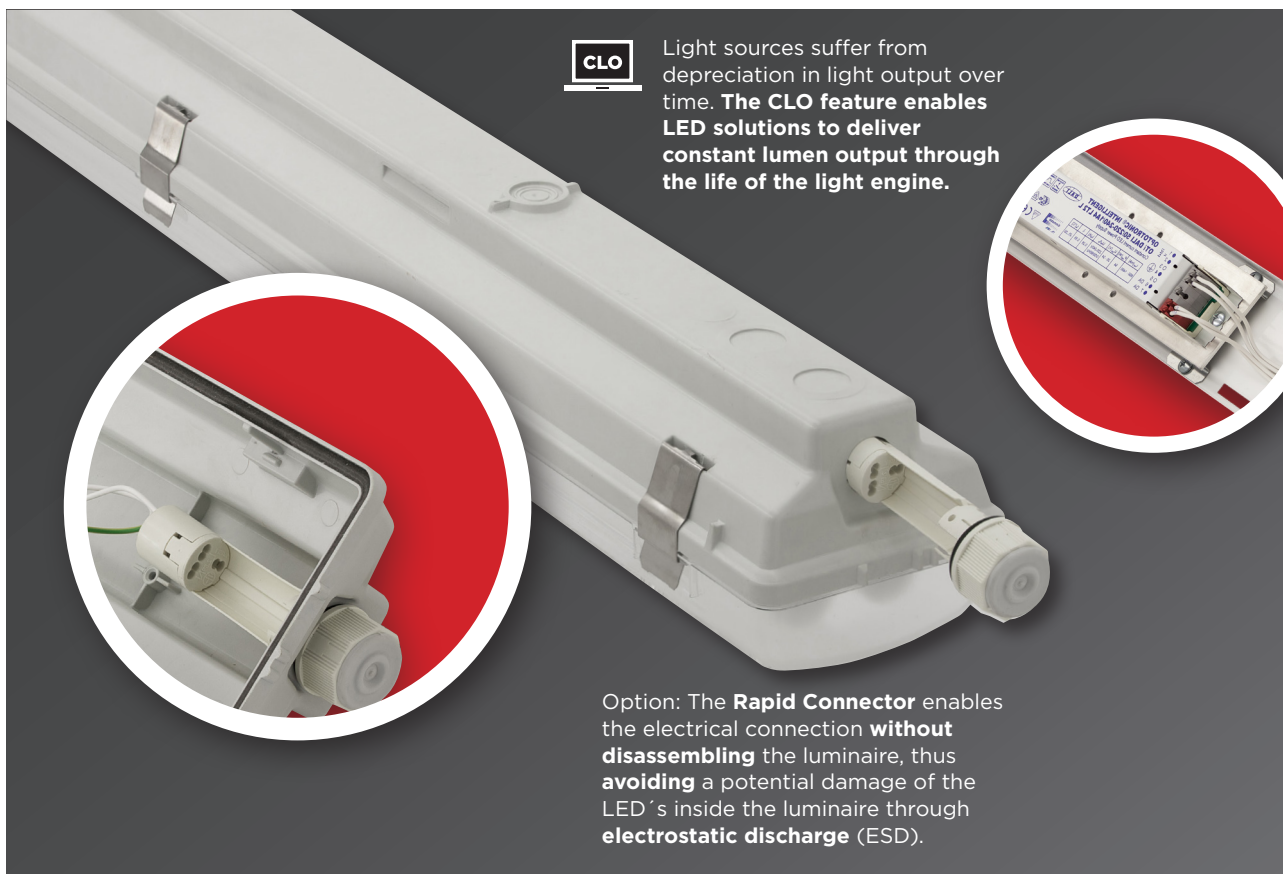


LED-Version with motion sensor



The gear tray is made of white powder coated steel sheet according to **Zhaga** standards. On request customisation possible.

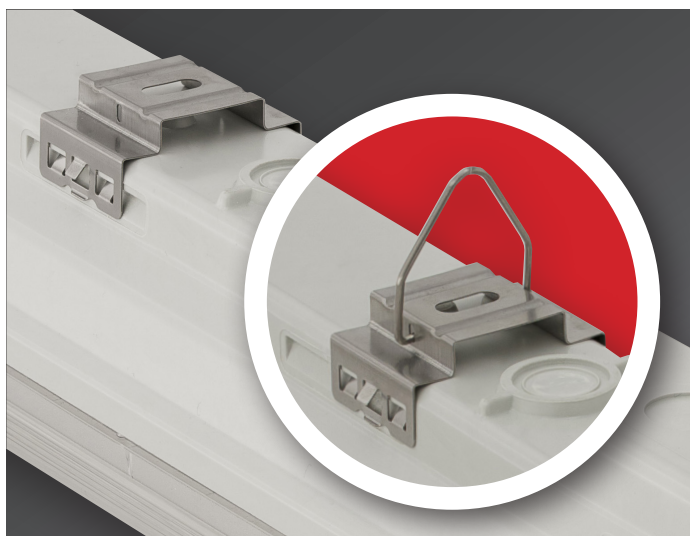
LED



Light sources suffer from depreciation in light output over time. The **CLO** feature enables LED solutions to deliver constant lumen output through the life of the light engine.

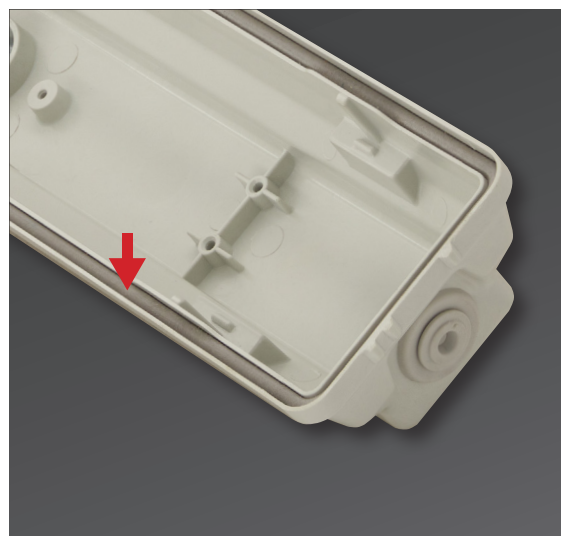
Option: The **Rapid Connector** enables the electrical connection **without disassembling** the luminaire, thus **avoiding** a potential damage of the LED's inside the luminaire through **electrostatic discharge (ESD)**.

771 - FAVOURITE LED



Ways of installing:

1. With stainless steel suspension brackets (easy-to-install) onto the ceiling.
2. Suspension on chains with stainless steel suspension brackets mounted with hooks.



In order to ensure maximum chemical and weather resistance, silicon-based gasket with enhanced resistance is optionally available.

Technical Data

Type	Power (W)	LED lum. flux (lm)	Total lum. flux (lm)	Luminous efficacy (lm/w)	Correlated colour temp (Kelvin)	CRI	lifetime L70B50 (Ta=35°C)	A (mm)	B (mm)	C (mm)	Weight (kg)
Philips Fortimo LED Strip LV4											
771 1x600 mm	15	2200	1910	123	4000	>80	>50.000 h	669	460	360	1,1
771 1x1200mm	29	4400	4020	128	4000	>80	>50.000 h	1277	800	700	1,95
771 1x1500mm	35	5500	4985	128	4000	>80	>50.000 h	1577	1100	1000	2,2
771 2x1500mm*	48	5500	6385	123	4000	>80	>50.000 h	1577	1100	1000	2,83
Philips Fortimo LED Line HV2											
771 2x1200mm*	54	8000	7400	137	4000	>80	>50.000 h	1277	800	700	2,6
771 2x1500mm*	66,5	10000	9180	138	4000	>80	>50.000 h	1577	1100	1000	2,83
Osram PrevaLED Slim 3											
771 1x600 mm	15	2200	1900	127	4000	>80	>50.000 h	669	460	360	1,1
771 1x1200mm	30	4400	3850	128	4000	>80	>50.000 h	1277	800	700	1,95
771 1x1200mm	35	4400	4450	127	4000	>80	>50.000 h	1277	800	700	2,05
771 1x1500mm	40	5500	5125	128	4000	>80	>50.000 h	1577	1100	1000	2,2
771 1x1500mm	46	5500	5575	125	4000	>80	>50.000 h	1577	1100	1000	2,3
771 2x1500mm*	53	7200	6550	124	4000	>80	>50.000 h	1577	1100	1000	2,83
Philips Certaflex HV2											
771 1x1200mm	28	3400	2880	102	4000	>80	>30.000 h	1277	800	700	1,95
771 1x1500mm	37	4130	3800	103	4000	>80	>30.000 h	1577	1100	1000	2,2

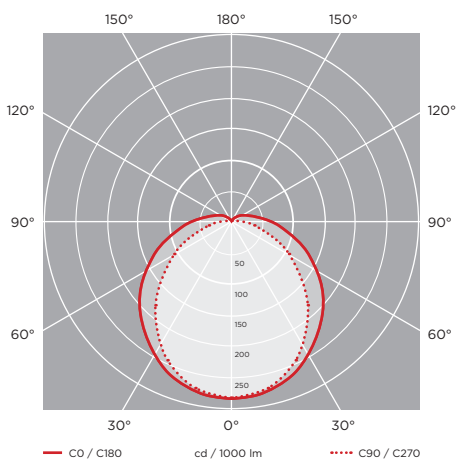
* The LED strips are placed in one line in a twin (wider) housing.

Schematic drawing with main dimensions

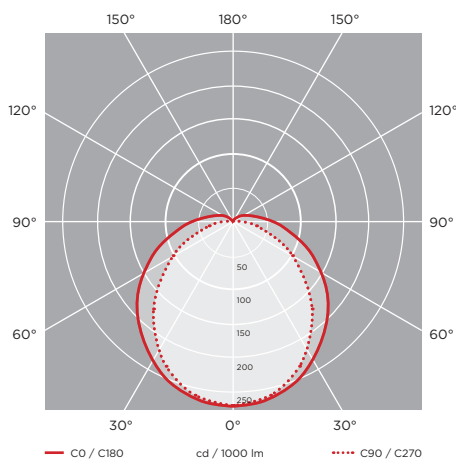


Photometric curves:

771-Favourite LED 30 W (PrevaLED)



771-Favourite LED 29 W (Fortimo) LED strip



Further options:

- emergency kit
- through wiring
- dimmable driver
- IP 66
- protection class II
- halogen-free wiring
- motion sensor
- CLO